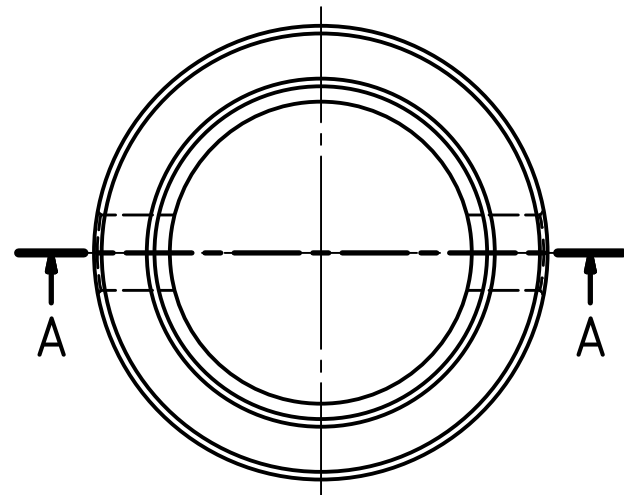
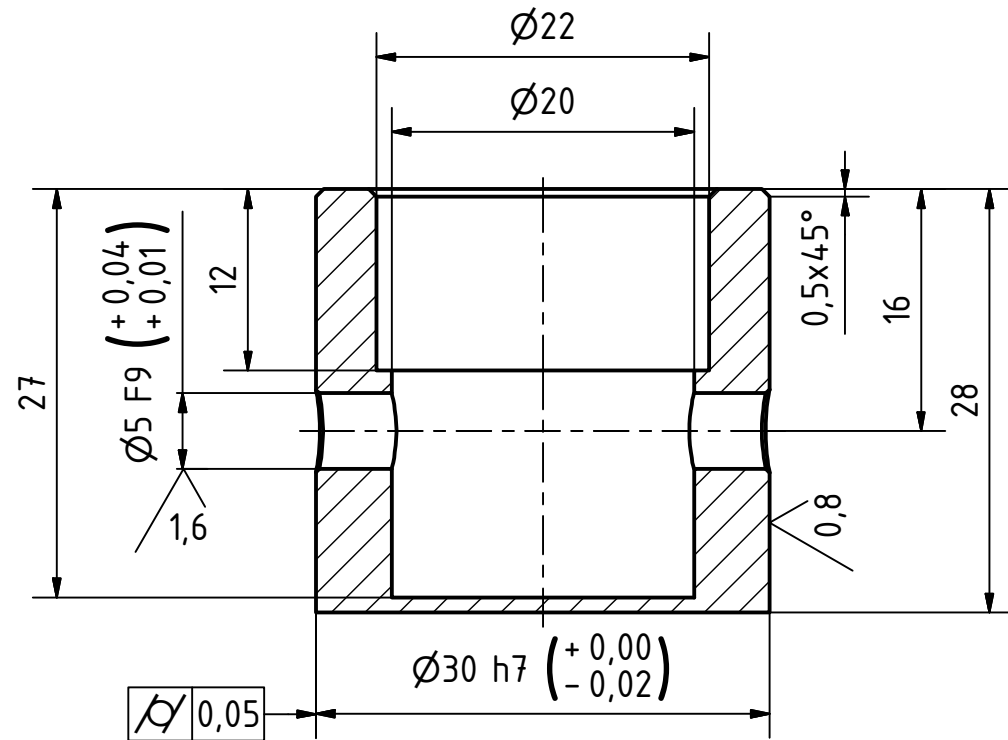
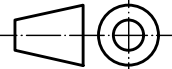


3,2 / (✓)

A-A (2 : 1)



Break Sharp Edges: 0,1 mm

Revision	Date	Description				
Engineered by:			Name:	Date:	Scale: 2:1	
		Designer:	Galba, J.	17/07/2010	SheetSize: A3	
		Approved:	Galba, J.	17/07/2010		
Project: Miniature Model Hot Air Engine					Material: Steel, Mild	
					Total Mass: 0.081 kg	

Title:
Horizontal Stirling Engine
Piston

Corresponding symbols								
Roughness Classes (NBN 88-02) (ISO 1302)								
Roughness Value "Ra" in µm (NBN 88-02) (ISO 1302)								
	N11	N10	N9	N8	N7	N6	N5	N4
	25	12,5	6,3	3,2	1,6	0,8	0,4	0,2
Allowable deviations for dimensions without tolerance indication (machined surfaces)								
Accuracyclass (ISO 2768.1)	For measurements (deviations in mm)							
	Dimensions in mm							
	0,5 to 3	>3 to 6	>6 to 30	>30 to 120	>120 to 400	>400 to 1000	>1000 to 2000	>2000 to 4000
f Fine	±0,05	±0,05	±0,1	±0,15	±0,2	±0,3	±0,5	±0,8
m Medium	±0,1	±0,1	±0,2	±0,3	±0,5	±0,8	±1,2	±2
c Rough	±0,2	±0,3	±0,5	±0,8	±1,2	±2	±3	±4
v Very Rough	-	±0,5	±1	±1,5	±2,5	±4	±6	±8
Fillet and chamfers								
Dimensions in mm								
0,5 to 3	>3 to 6	>6 to 30	>30 to 120	>120 to 400	0,5 to 3	>3 to 6	>6 to 30	>30 to 120
±0,2	±0,5	±1	±2	±4	±1°	±30'	±20'	±10'
±0,4	±1	±2	±4	±8	±1°30'	±1°	±30'	±15'
					±3°	±2°	±1°	±30'
Angles (in ° and ')								
Length of the shortest leg								
to 10	>10 to 50	>50 to 120	>120 to 400	above 400	to 10	>10 to 50	>50 to 120	>120 to 400
±5'	±10'	±15'	±20'	±25'	±1°	±2°	±3°	±4°



InventorWizard

Drawingnumber:

Design State:

Released

Sheet:
0001

Drawing made with
autodesk Inventor
Revisions only
permitted by CAD